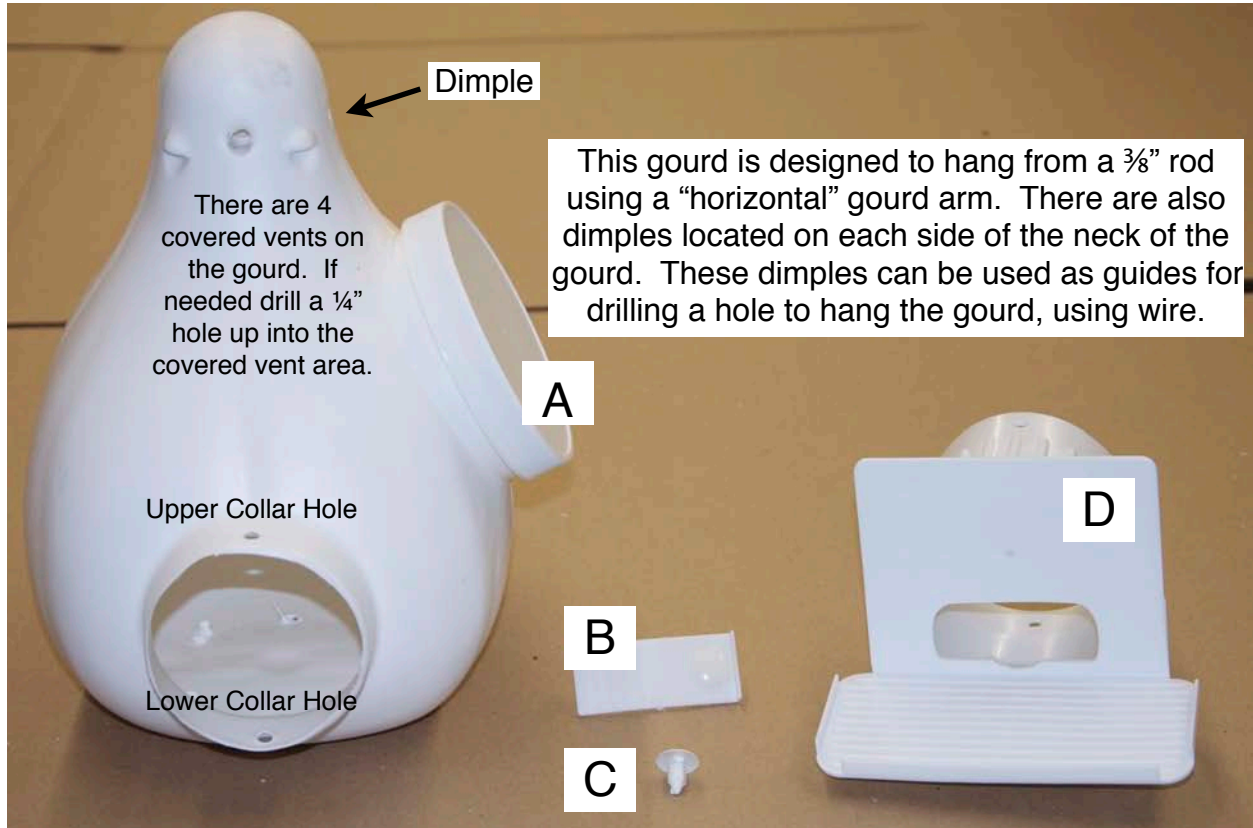


Troyer Vertical Gourd



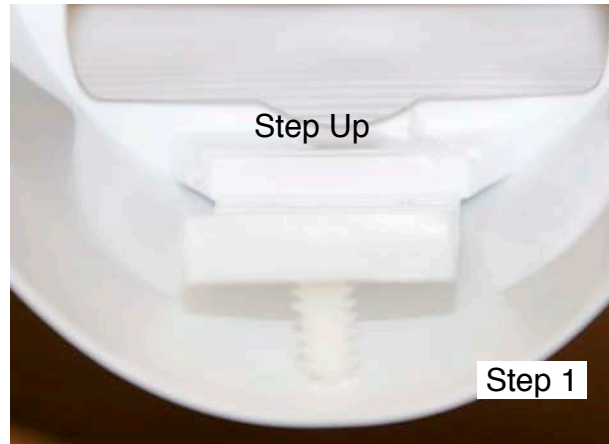
Parts

- A) Troyer Vertical Gourd
- B) Traction with pin inserted
- C) Push pin
- D) Troyer Tunnel Conley II (shown) or Round Hole Entrance

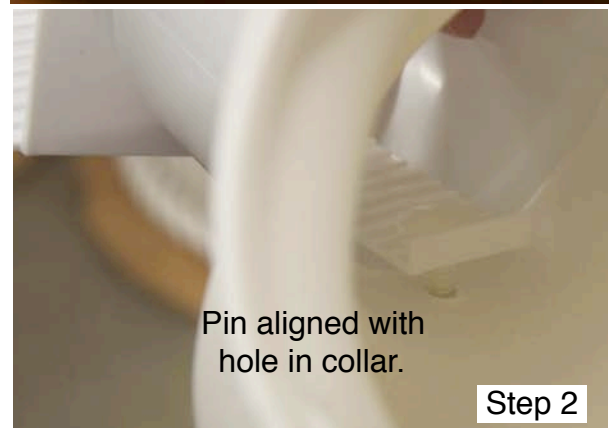
Very Important!!!
Please be sure to add 2 large handfuls of pine needles or cedar shavings to the Troyer Vertical Gourd!

Troyer Vertical Gourd

Step 1) Partially installing the traction into the tunnel. Hold the tunnel in one hand and with the other push the end of traction that does NOT have the push-in pin, up and underneath the step-up. (The step-up is the small plastic piece that is found on the inside of the tunnel underneath the entrance hole). You will need to push firmly, and you will feel a snapping sensation as the traction works its way underneath the step-up. STOP! When you get the traction tread underneath the step-up your tunnel should like the photo step 1.



Step 2) Install the tunnel onto the Vertical Gourds collar. Bring your nearly completed tunnel to the collar of the gourd. Slide the tunnel onto the the collar. Notice that your TVG has a pre drilled hole at the top and bottom of the collar. You want to align the tunnel so that the tunnel slips around the collar, and that the traction tread with its pin is inside the collar with the pin attached to the traction is over the hole of the collar. DO NOT push the pin into place yet. See photo step 2.



Step 3) Get your push pin part C. This push pin is installed by aligning the hole on the tunnel to the hole in the collar, insert the pin and push-in all the way.



Step 4) Finish off the installation by pushing the pin in from step 2. You may need to push down on the tunnel with one hand while your other hand which has been inserted thru the access port is pushing the pin in from the interior out thru the bottom of the gourd.



Step 5) Important! Place 2 large handfuls of pine needles or cedar shavings into the gourd.