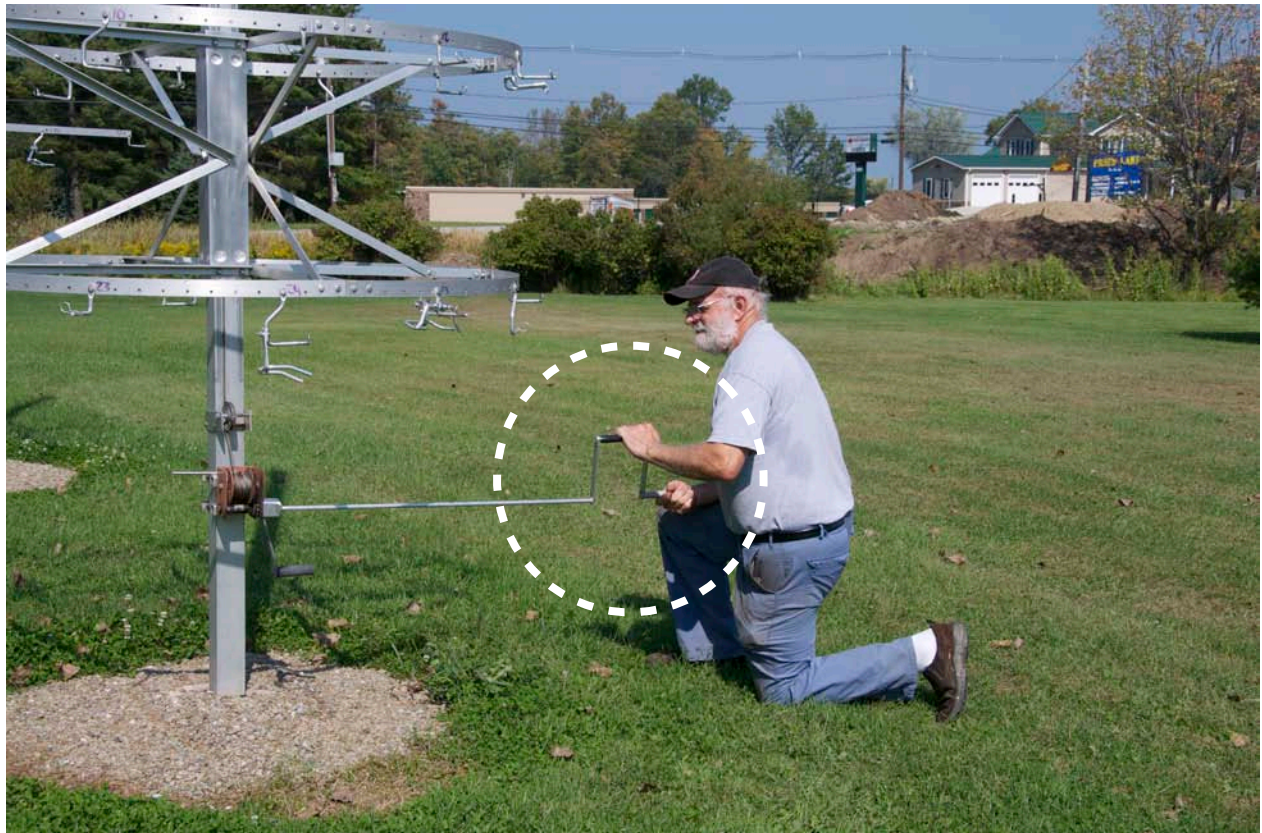


# Brake Winch Extension Handle



# **Brake Winch Extension Handle**

Place the square tube end with the notch so that the notch encompasses the winch handle.

While pushing towards the winch and placing one hand on the u handle and the other hand on the outer handle, begin to crank back wards to bring the unit down, or forward to raise the unit.

You will get a work-out.

Occasionally the extension handle will slip from the winch handle. This is why it is so important that you are using only a brake winch. Also keep your safety bolt in place till you lower the hub section to a few inches from the safety bolt. Then remove the safety bolt and continue to lower your hub.

The extension handle will also keep you at a safe distance outside the fall zone of the hub unit.

Not all winch handles are the same. We noticed that some of the handles have larger welding beads on them. If yours does, it will simply be a tighter fit.