

Canopies

Step 1) Clean and prep the surface of your natural gourd and cut in your entrance holes and access ports.

Step 2) Place a mark 2" above the top of your entrance hole.



Step 3) Hold your canopy to the gourd. Look for any large gaps and if needed, trim the canopy using tin snips.



Step 4) Once your canopy has a nice tight fit against your gourd place a marker line on to the gourd. Do this by placing the canopy on to the gourd and trace the underside of the canopies curvatures on to the gourd.



Step 5) Using a good quality exterior grade, paintable caulk, place a large bead following the marker line you placed on the gourd. You can add more caulk if you need too.

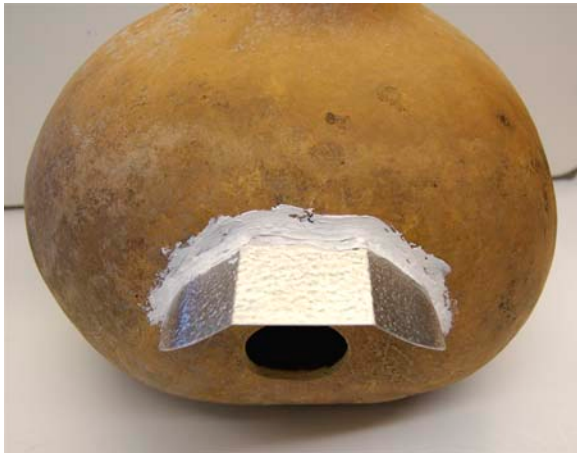


Step 6) Insert your canopy into the bead of caulk. You can maneuver the canopy around in the wet caulk. You will want the canopy to be level both horizontally and vertically.

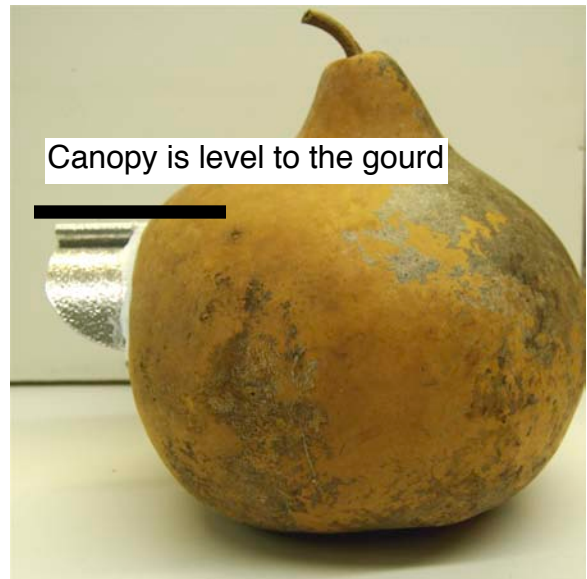
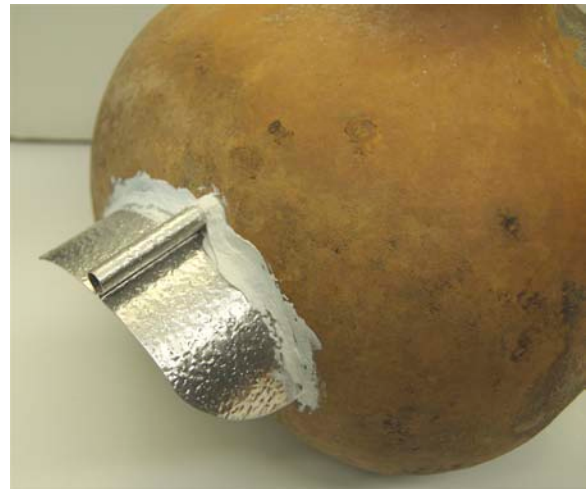


Canopies

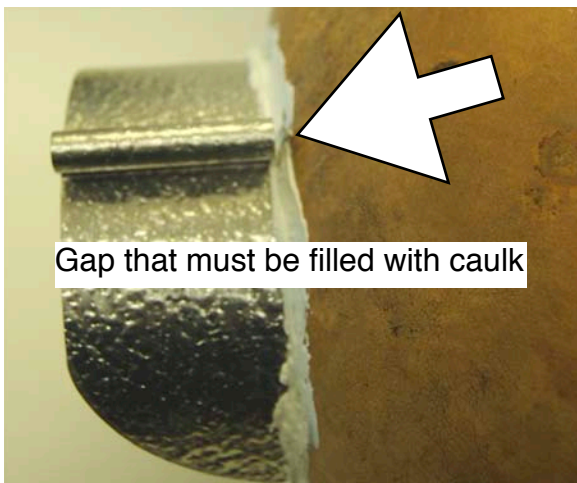
Step 7) Add more caulk if necessary, and smooth the caulk around the canopy.



tube for drying time), paint your gourd. Hang gourd and enjoy.



Step 8) If you purchased the perch top canopy there will be a gap between the perch feature and the gourd. You will need to fill this gap with caulk.



Step 9) Check to make sure your canopy is level. Once the caulk has cured (check your