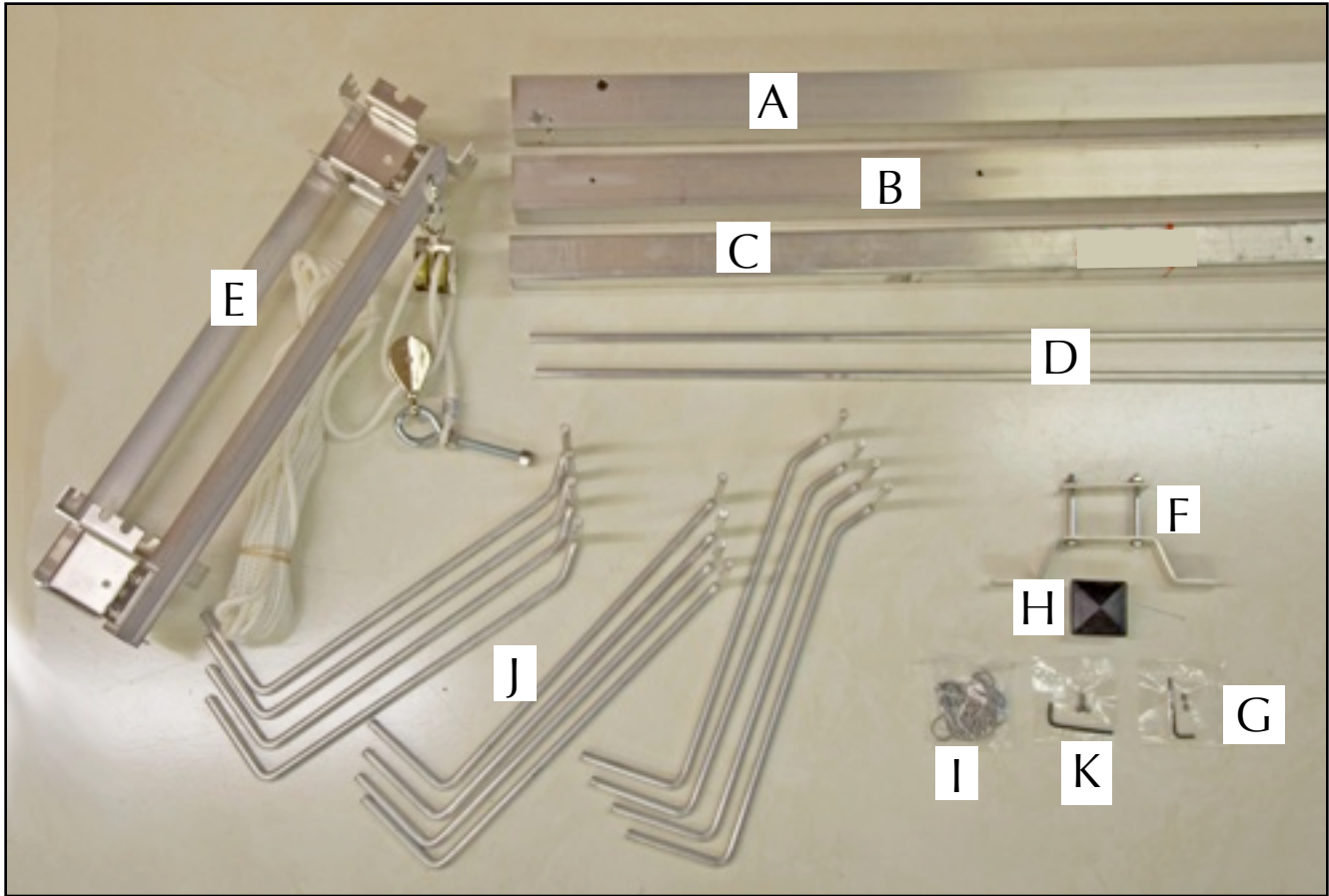


12 XL Gourd Rack



Parts List

POLE BOX

- A: Top of Pole (Top of pole has pre-drilled holes, opposite end has splice installed)
- B: Bottom of Pole (2 square cut ends. Place end of pole with drilled and tapped holes over ground stake)
- C: 48" Aluminum Ground Stake
- D: Top Perch rods 48" long

HUB BOX

- E: Hub with attached rope, pulleys and eyebolt (12 unit hub shown)

- J: 12 Aluminum Gourd Arms

12 Units= 4 each of; left, right, straight (vertical shown).

HARDWARE BAG

- F: Rope Winder w/ attached stainless steel hardware
- G: (2) 10 - 24 x 1/4" set screws with 3/32" allen wrench
- H: Top Cap for pole
- I: 12 Stainless Hitch Pins
- K (4) 1/4 - 20 x 1/4" stainless set screws with 1/8" allen wrench

Tools Needed for Assembly

- 7/16" box wrench
- 9/16" box wrench
- Ruler, pencil
- Speed square
- 3 in 1 oil
- Rubber Mallet

To remove ground stake from pole, use part "G", hex key, and remove and discard set screw

To REMOVE ground stake from pole use your hex key from part "G" remove and discard this set screw



Top of pole

12 XL Gourd Rack

The installation of a ground stake is as vital as the foundation of your home. Both need to be done correctly in order to support the housing. Please read and follow these directions. Your racks resistance to winds will only be as good as its foundation.

STOP

**Purchased a Ground Sleeve?
Follow sleeve installation instructions
and skip steps 1-7.**

Step 1 Installing the aluminum ground stake. Using a post hole digger, dig a hole with a minimum depth 32-36" deep by 9" in diameter. *Poor ground conditions may warrant a larger hole and more concrete.*



Step 2 After your hole is dug place about 4" of gravel into the hole.



Step 3 You will need at least 3 bags of Ready to Use Concrete Mix, 80 pounds each.

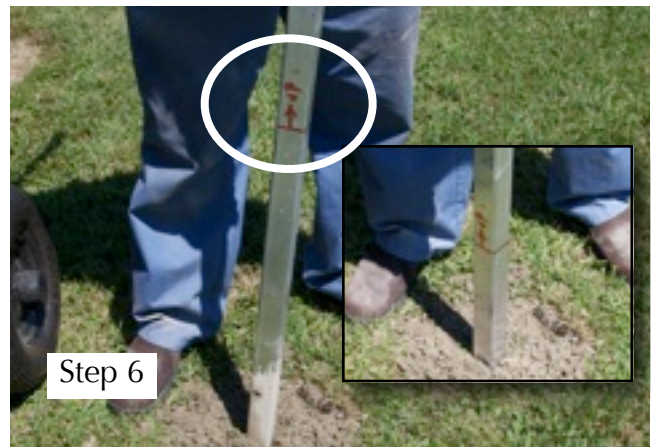
Step 4 Empty contents of the ready mix concrete into an old wheel barrow. *Mix and handle the concrete according to the directions on the bag.*



Step 5 Shovel your wet concrete into your hole, to the top of your hole



Step 6 Mark your ground stake using a bold marker 24" from one end. Insert your ground stake into the cement. Hold the ground stake vertically, You firmly push down several inches then pull up a fraction, then



12 XL Gourd Rack

push downward, slowly sinking the aluminum stake into the cement. **Stop when the cement meets the line drawn on your stake.** Next fill the hollow tube of the stake with cement. To settle the cement in the tube gently tap the sides of the stake. Finish by sloping the concrete at the base of the stake away from the ground stake so water will not puddle against it.



Step 6

Step 7 Wipe off any concrete from the exterior of the ground stake, check for level on 2 sides and that your ground stake is the full 24 inches above ground.



Step 7

Periodically check your ground stake for plumb. For best results wait at least 2 days for your concrete to cure.

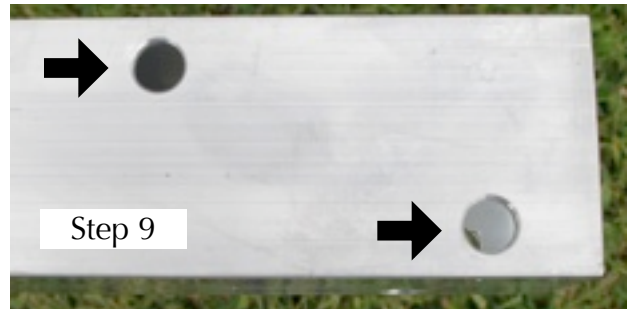
Step 8 Assemble the pole. Notice that your pole consists of a top piece, (A) which has a splice piece installed at one end of the pole and holes on the other end, and a bottom piece (B) which has 4 drilled and tapped holes. Upturn a 5 gallon bucket and lean the bottom section so that the end with the drilled-tapped holes is furthest away. **TIP!** Spray the splice with WD40, it will aid in inserting the splice. Insert the splice piece into the bottom section (the end where

there are no drilled and tapped holes). The splice should slide in with little force. The splice will remain in place due to friction.



Step 8

Step 9 Set your pole over the bucket so that you see 1 pre-drilled large hole in the upper right and one same size hole, approximately 2" lower and to the left.



Step 9

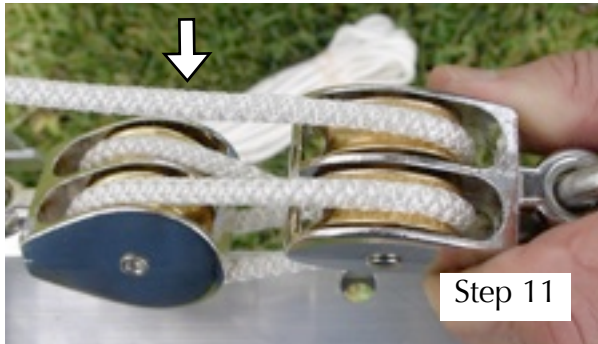
Step 10 Install your hub unit. Your hub unit (E) came with its rope attached to a quick link (see circle). Slide your hub with the quick link at the upper left. Slide the hub through the pole so that your quick link is several inches below the lower hole on the left.



Step 10

12 XL Gourd Rack

Step 11 Your rope has been pre assembled onto the hub. One end of the pulley is attached to the quick link, the other end is attached to the eyebolt. Leave any rubber bands around your rope. Grasp the upper pulley that has the eyebolt attached with one hand and with the other hand grasp the rope near the quick link. Your rope should be hanging to the front of the upper double pulley, left side. See photo 11. If your rope does not look like the photo, it is simply twisted and turn it clockwise, or counter clock wise till it appears *exactly* like the photo.



Step 11

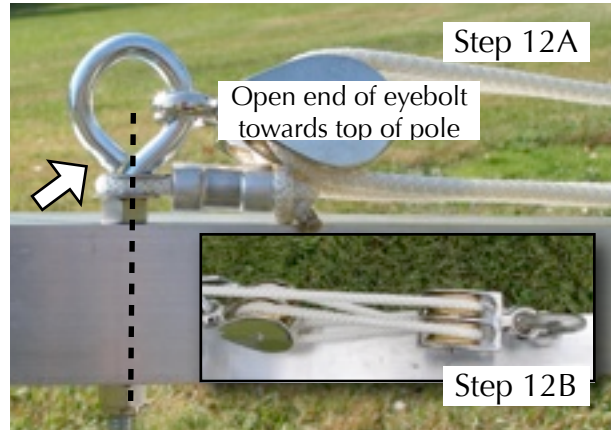
Step 12 Remove the insert lock nut from the end of the eyebolt. Insert the eyebolt into the lower hole (located on the lower left side).



Step 12

Thread the lock nut back on and tighten the nut all the way to the pole. Make sure that you orient the eyebolt so that open end is facing up, and that the eyebolt is parallel to the pole. See photo 12A. Push your hub further down the pole approximately 6" and check your rope. It should look like photo 12B.

Step 13 Oil the pulleys with any quality oil such as 3 in 1 household oil. Oil the pulley shaft, inside and outside being sure to catch all 4 pulleys. Oiling should be done every year.



Step 12A

Open end of eyebolt towards top of pole

Step 12B



Step 13

Step 14 Install the top perch rods. You will need your 2, 10 - 24 x 1/4" set screws (G) and your 2 top perch rods (D) and the allen wrench (G). Locate the small tapped hole. Using your allen wrench thread the set screw in to the hole only deep enough to hold the set screw

into place. Slide the top perch through the hole and find the center at around 24". Tighten the set screw and repeat for the other top perch rod.

Step 15 Insert the top cap. Insert the black top cap, by gently tapping it into the top of your pole.



Step 14

Step 16 Install the rope winder (F). Measure from the bottom of the pole up, and mark the pole at 54" The rope winder came pre assembled. Undo 1 of the bolts by backing off the whiz nut, and remove the bolt.

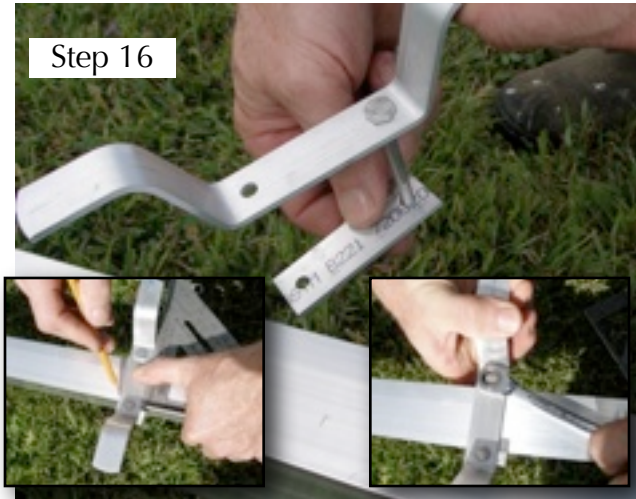


Step 15

12 XL Gourd Rack

Slide the open section around your pole at your mark, reinsert the bolt and thread the whiz nut back on and tighten. Make sure your rope winder is square to the pole, by using speed square.

snugly tighten them.



Step 16

Step 17 Unfurl your rope and walk it out the full distance. Once rope is unfurled, run your hub down to the rope winder. Notice how the rope you unfurled is becoming shorter as the hub approaches the rope winder. Wrap the remainder of the rope loosely around the rope winder.



Step 17

Step 18 Stand your pole up and slide the pole over your ground stake. The pole can be installed by a single person, but please always have an extra pair of helping hands.



Step 18

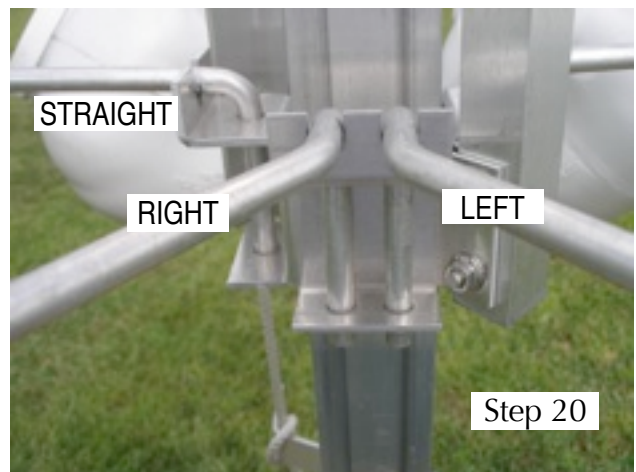
Step 19 You will need your 4 1/4-20 x 1/4" set screws and allen wrench (K). Using your allen wrench thread each of the set screws into the drilled and tapped holes near the bottom of your pole. Working from one side first lightly tighten the 2 set screws then do the other side, this time snug up the set screws. Return to the first 2 set screws and



Step 19

Step 20 Install the gourd arms (J). Your gourd rack comes with 3 different styles of arms. There are arms that are straight (wrapped in white rubber bands), there are arms that are bent to the right (wrapped in red rubber bands), and arms that are bent to the left (wrapped in blue rubber bands). Straight arms always are inserted into the single bracket holes. The paired hub bracket holes use your left and right arms. Notice in photo 20 how the left and right arms turn out from the hub. Make sure your arm is fully seated into the u shaped slot.

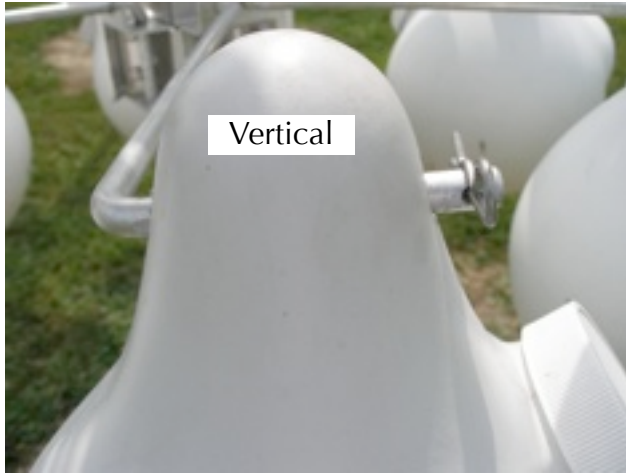
Vertical gourd arms ends are bent at 90 degree angle. You may need to enlarge your gourd hanging hole to 3/8" to accommodate arms. Insert the hitch pin (I) into



Step 20

12 XL Gourd Rack

the pre drilled hole. Hitch pin will keep your gourd from falling off.



Horizontal Gourd arms are straight with a stop nut fixed on.



Once all your gourds are on your system its time to raise the gourds up. Wearing a pair of non slip gloves, unwrap your rope from around the winder. Stand about 3 feet from the pole and pull on your rope. Never stand directly under gourd rack while raising or lowering. The hub should raise with very little effort. When the hub reaches the top you will feel a stopping sensation as the pulleys meet. Holding tightly to your rope you will walk to your rope winder and wrap the excess rope around your winder. Be sure no rope is falling on the ground or that it is laying over a predator guard. A climbing predator could use this loose rope to climb your pole and raid the nest.

That's it! Wasn't too bad, was it? Creative Universe Enterprises wishes you many successful years as a martin landlord. Should you have questions about this

product please feel free to call or email us your questions. We are always happy to help.

Maintenance of Gourd Rack

Pole: Use any good quality car paste wax and wax your pole. Waxing can aid in the slipperiness, as well as protecting the aluminum pole from the weather elements.

Hub: Remove the arms and gourds from your rack and store inside. Place your hitch pins in the arm holes to keep from loosing them.

Rope: Check for fraying splitting or any cut marks on your rope. Note: minor fraying looks like little tufts of hair and is normal. If you are unsure of your rope replace it. Simply get in touch with us, we can supply you with a replacement rope at a reasonable cost.

Pulleys: Oil pulleys every year, it keeps the pulleys from squealing and makes raising and lowering very easy.



Rope wrapped onto the rope winder

This product designed and developed by Creative Universe Enterprises © 2001 All Rights Reserved